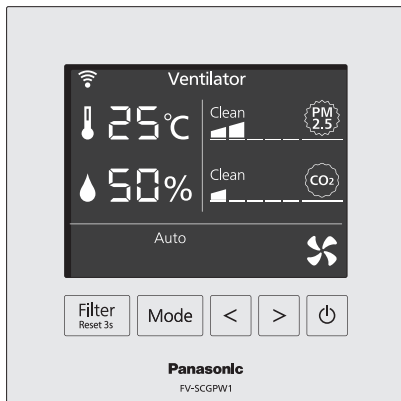




Operating and Installation Instructions Ventilator remote controller

Model No. **FV-SCGPW1**



CONTENTS

Safety Precautions	-----	2
How to Install	-----	3
Names of Parts	-----	4
How to Operate	-----	5-6
Maintenance	-----	6
Abnormal Occurrence	-----	7
How to Use Application	-----	7-8
Specifications	-----	9
Information	-----	9-10
Copyright	-----	41-48

Operating and Installation Instructions Ventilator remote controller

Thank you for purchasing this Panasonic product.
Please read these instructions carefully before
using this product, and save this manual for future
use.

English

ประเทศไทย

Việt nam

Indonesia

Safety Precautions

Always follow these instructions

To avoid the possibility of causing injury to users or damage to properties, please follow all explanations written below.

- The following symbols are used to classify and describe the type of instructions.

	This symbol denotes an action that must NOT be performed.
	This symbol denotes an action that must be performed.

- If NOT following the instructions or misusing the product, it may cause damage, the levels of damage are categorized and explained as indicated below.

	WARNING	Denotes a potential hazard that may result in serious injury or death.
	CAUTION	Denotes a hazard that may result in minor injury or damage to the unit or other equipment.

WARNING	
	Do not change specifications, and disassemble or remodel the product. May cause fire, electrical shock or injury.
	Provide a secure wiring connection using the specified cable so that no external force is applied to the connector. May cause fire.
	Do not use the product near any medical equipment or automatic control equipment. (automatic doors and fire alarms, etc.) Radio wave may interfere with the equipment and may cause incident due to malfunction.
	Keep at least 15 cm away from the product if you have a cardiac pacemaker. Radio wave may interfere with the operation of pacemaker.
	Keep the product away from devices such as other wireless devices, microwaves and the devices that use 2.4 GHz signal. Radio wave may interfere with the equipment and may cause incident due to malfunction. The product may not work properly depending on locations it is used.

CAUTION	
	Do not use the product in a high humidity location such as a bathroom. May cause electrical shock.
	The product should be installed firmly by a qualified person. Faulty installation may cause electric shock or fire.
	Do not install the product in the following locations: <ul style="list-style-type: none"> • Where flammable gas may leak. • Where water or oil splashes (machine oil included). • Where electromagnetic wave generators are installed. • Where organic solvents splash. May cause fire, electrical shock or injury.
	Do not perform the following actions: <ul style="list-style-type: none"> • Pour water, or clean with water or detergent. • Insert fingers or sticks into the openings. • Hang on to the product. May cause electrical shock or injury.
	Do not damage or extend the signal cord. May cause electric shock or fire.

How to Install

■ Before installation

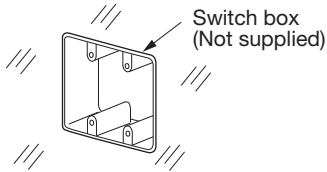
Be sure to confirm that the following attachments are enclosed in the packing box.
If anything is missing, contact our After-Sales Center or your dealer.

Ventilator remote controller ----- 1 set
Signal cord -----10 m
Screw (M4) ----- 2 pcs

Rubber packing -----2 pcs
Operating and Installation Instructions -----1 set

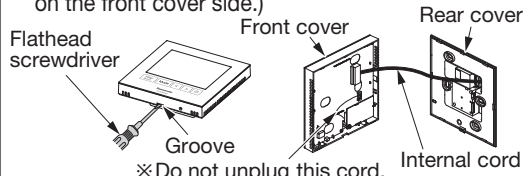
■ How to install

1. Embed and fix a switch box in the wall.



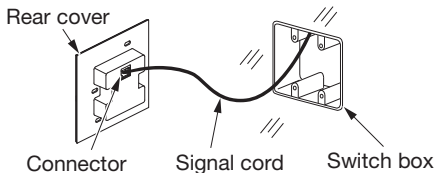
※ Use a switch box of the right size for the product. Refer to the external dimensions of the product in page 4. (Recommended size: 100 x 100 mm or 86 x 86 mm)

2. Insert a flathead screwdriver into the groove at the underside of the product to remove the rear cover, and unplug the internal cord. (Unplug the connector on the front cover side.)

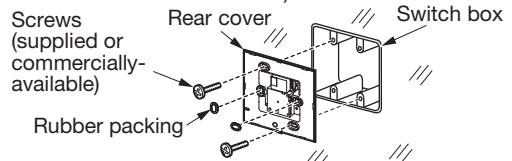


※ Do not unplug this cord.
※ Be careful not to damage the product.
※ Do not apply tension to the internal cord.

3. Plug the signal cord into the connector on the rear cover. (Connect the other side of the signal cord to the relevant ventilator.)

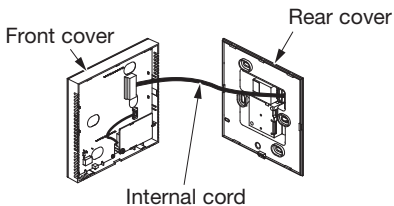


4. Fix the rear cover to the switch box with screws. (Use supplied or commercially-available screws suitable for the switch box.)

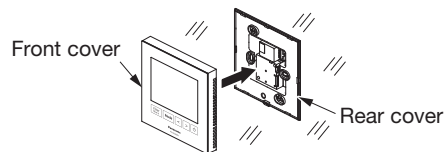


※ Cover the installation holes not used for installation with rubber packing.

5. Reconnect the internal cord to the front cover.



6. Attach the front cover to the rear cover.

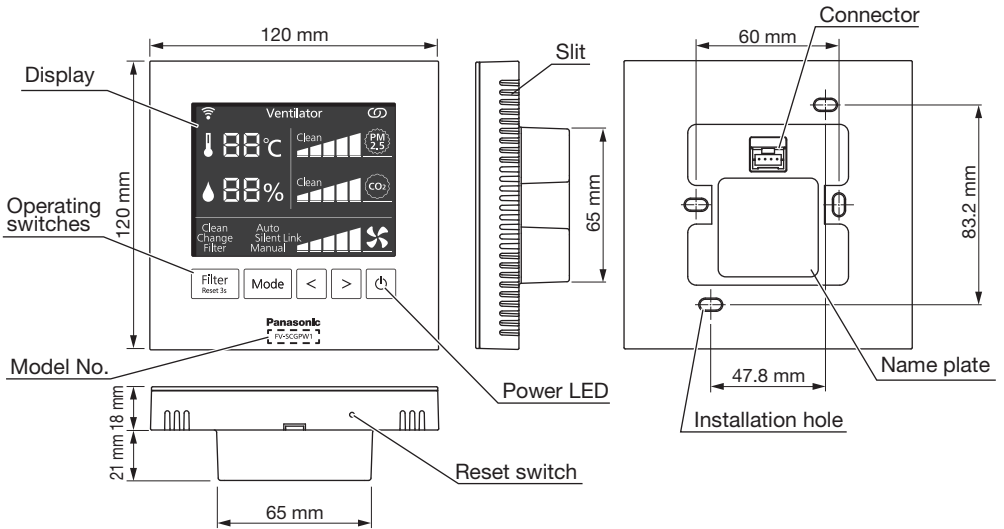


※ Prevent the internal cord from being bitten by the covers.
※ Attach the front cover firmly. (A click will sound when installed correctly.)

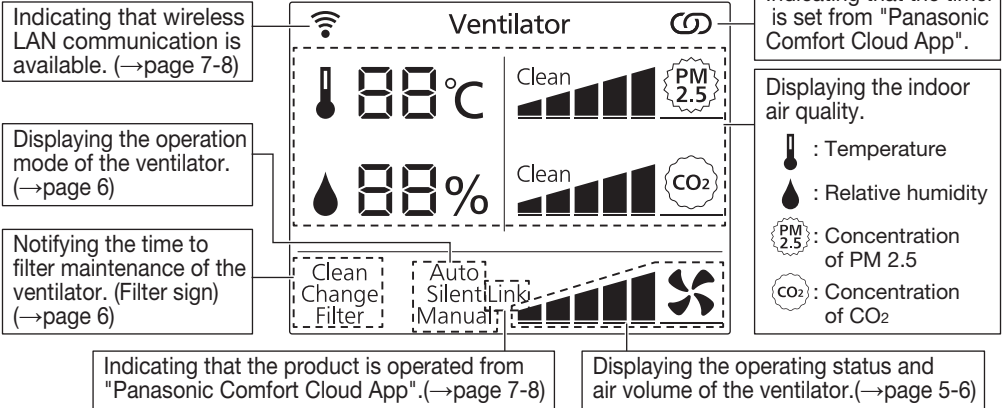
Notice

- Do not apply excessive force to the front cover.
- Install the product at a height of 1 to 1.5 m from the floor.
- Install the product vertically to the wall.
- Leave a minimum clearance of 20 cm around the product.
- Do not install the product where exposed to direct sunlight, heat or wind from an air conditioner.
- Do not install the product near windows or doors.
- Install the product in the same room as where the relevant ventilator is installed.
- Do not put obstacles around the product.
- Install the product at least 1 m away from TV, radio or PC.

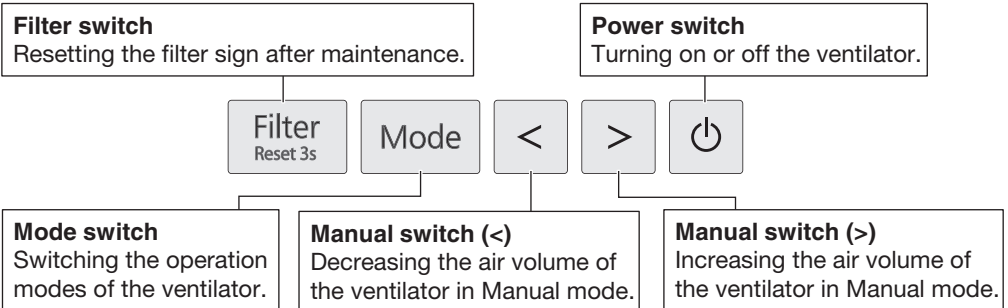
Names of Parts



■ Display



■ Operating switches



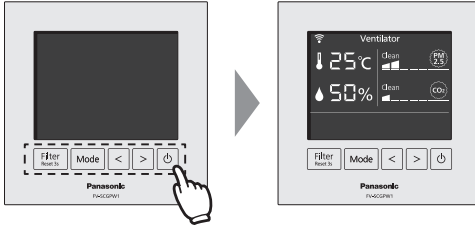
How to Operate

Turn on / off the display

1. To turn on the display

Touch any one of the switches.

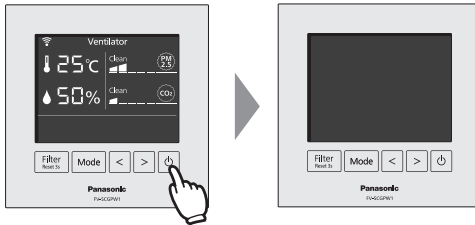
※Touch  when the ventilator is operating (the Power LED is lighting), the ventilator stops operating.



2. To turn off the display

Touch and hold  until the display turns off (3 seconds or longer).

※If no operation is performed for a period of time, the display turns off.

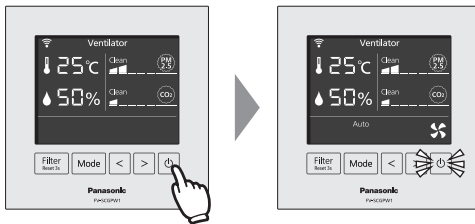


(3 seconds or longer)

Turn on / off the ventilator

1. To turn on the ventilator

Touch . (The ventilator starts operating and the Power LED lights up.)



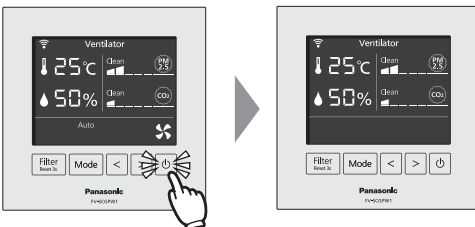
※Status indication by Power LED.

LED	Ventilator status
Lighting	In operation
Not lighting	Not in operation (stop)
Fast blinking	Abnormal stop (→page 7)

2. To turn off the ventilator

Touch .

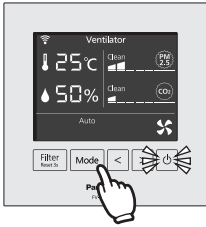
(The ventilator stops operating and the Power LED goes out.)



How to Operate (Continued)

Change operation modes

Touch **Mode** to change the operation modes.



【Operation modes】

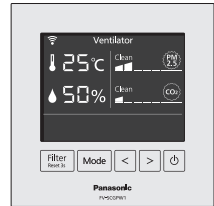
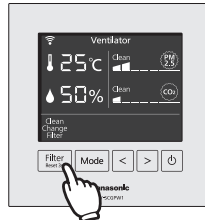
- **Auto** : This mode detects CO₂ and PM_{2.5} in the room with the sensors to switch the air volumes according to their concentration.
- **Silent** : This mode reduces the air volume and operates more quietly than Auto mode. The sensors detect CO₂ and PM_{2.5} in the room and the air volumes are switched according to their concentration.
- **Manual** : This mode operates the ventilator with the set air volume. Users can adjust the air volume by touching **<** or **>**.



Reset Filter sign (Maintenance of the ventilator)

The filter sign lights up when it is time to clean or replace the ventilator filter. After it is cleaned or replaced, follow the step below to reset the filter sign.

Sign	Maintenance details
Clean Filter	Clean the filter.
Change Filter	Replace the filter.
Clean Change Filter	Clean and replace the filter.



(3 seconds or longer)

■ Reset operation

Touch and hold **Filter Reset** until the Filter sign turns off (3seconds or longer).

※ Refer to the manual of the ventilator for the maintenance method.

※ In case that only the ventilator has been used before connecting the controller to it, the Filter sign may light immediately after the controller connection.

Maintenance

- Before maintenance, turn off the ventilator and the breaker.
- Periodically clean and wipe the front cover (particularly for the side slits) with a dry cloth to prevent accumulation of dust.

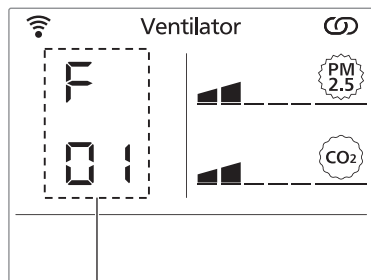
Notice

- Do not use household alkaline synthetic detergents for the product. The resin part may be discolored or damaged.

Abnormal Occurrence

■ When the error codes appear

If any error code appears on the display, take the following actions:



Error code

※The Power LED blinks upon error. (It does not blink even if an error occurs while the ventilator is not in operation)

Code	Error details	Action to be taken
F01	Circuit error	Turn off the ventilator and the breaker, and then contact your dealer for repairs.
F15	Sensor error	
F16		
F21	Motor error	If wireless communication is not required, disconnect the wireless LAN connection. (→page 8)
F41	Wireless communication error	
Other error code		Turn off the ventilator and the breaker, and then contact your dealer for repairs.

■ Other defects

- If PM2.5 concentration does not decrease for a long time even though the ventilator is operating, replace the ventilator filter.
- If the temperature or humidity indication are defective, turn off the ventilator and the breaker, and then contact your dealer for repairs.
- When the operating switches do not work properly, press the reset switch with a pointed rod. If the problem persists, contact your dealer for repairs.



How to Use Application

⚠ WARNING



Do not use the product near any medical equipment or automatic control equipment. (automatic doors and fire alarms, etc.)

Radio wave may interfere with the equipment and may cause incident due to malfunction.



Keep at least 15 cm away from the product if you have a cardiac pacemaker.

Radio wave may interfere with the operation of pacemaker.

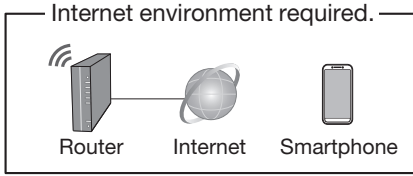


Keep the product away from devices such as other wireless devices, microwaves and the devices that use 2.4 GHz signal.

Radio wave may interfere with the equipment and may cause incident due to malfunction. The product may not work properly depending on locations it is used.

How to Use Application (Continued)

■ Preparation



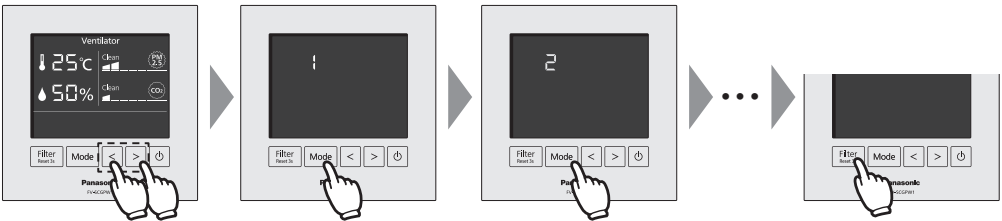
- Use a smartphone with Android 4.4 and above/iOS 9 and above to use the app. However not all Android OS versions are available for the app.
- The product is designed as a terminal specifically for “Panasonic Comfort Cloud App”.
- It’s necessary to be able to communicate between a wireless LAN network and where the product is installed.

Install and start “Panasonic Comfort Cloud App”

For an Android user (Android 4.4 and above) : Search and install the app from [Google Play].
 For an iOS user (iOS 9 and above) : Search and install the app from [App Store].

- ※ The app user interface image may change for version upgrade without notice.
- ※ The app is free of charge. However there may be additional costs involved with connection and operation.

Wireless LAN settings on the product



(5 seconds or longer)

1. Touch and hold and at the same time until “1” appears on the display. (5 seconds or longer)
2. Touch to change the setting mode. (1 → 2 → 3 → 5 → 1 ...)

1	Connect the product to your home network using WPS mode.
2	Connect the product to your home network using AP mode.
3	Register the product with the app.
5	Initialize wireless LAN settings on the product.

3. Touch to select the setting mode.
4. Follow the instructions on the smartphone app screen.

※ To cancel the setting, touch and hold and at the same time until the display returns to the normal display. (5 seconds or longer)

※ lights up when the wireless connection is completed.

Notice

- If replacing the product, you need to make the initial settings again.

※ Connection status indication by .

Lighting	Connected
Slow blinking	Now connecting
Fast blinking	
Not lighting	Not connected

Specifications

Model No.	FV-SCGPW1	
Voltage / Power consumption	DC 7 V / 5.6 W	
External dimensions	120 * 120 * 38 mm (Body only) 120 * 120 * 18 mm (Installation state)	
Weight	0.3 kg	
Use condition	10 °C~40 °C, Relative humidity less than 85% (Indoor Use)	
Wireless LAN	Standard	IEEE 802.11 b/g/n
	Frequency range	2.4 GHz band
	Encryption	WPA2-PSK (TKIP/AES)

Information

Firmware Update Function

This product has functionality for connecting to the Panasonic firmware update server over the Internet to automatically update the device firmware to the latest version. To update the firmware, the device will do check, once per day, whether its firmware is the latest version after power up. And if an update is required, the update is applied and the device restarts automatically. Operations are not possible while the device is being restarted (which takes about 1-5 minutes).

Software License Information

This product incorporates the following software:

- (1) The software developed independently by or for Panasonic Corporation,
- (2) The software owned by third party and licensed to Panasonic Corporation,
- (3) The open source software under the BSD license and/or equivalent licenses.

The software categorized as (3) is distributed in the hope that it will be useful, but WITHOUT ANY WARRANTY, without even the implied warranty of MERCHANTABILITY or FITNESS FOR A PARTICULAR PURPOSE.

The following license terms shall be applied to Open-Sourced Components.

Supplicant license

Copyright (C) 2003-2016, Jouni Malinen <j@w1.fi> and contributors.
All rights reserved.

This software may be distributed, used, and modified under the terms of BSD license: Redistribution and use in source and binary forms, with or without modification, are permitted provided that the following conditions are met:

1. Redistributions of source code must retain the above copyright notice, this list of conditions and the following disclaimer.

Information (Continued)

2. Redistributions in binary form must reproduce the above copyright notice, this list of conditions and the following disclaimer in the documentation and/or other materials provided with the distribution.
3. Neither the name(s) of the above-listed copyright holder(s) nor the names of its contributors may be used to endorse or promote products derived from this software without specific prior written permission.

THIS SOFTWARE IS PROVIDED BY THE COPYRIGHT HOLDERS AND CONTRIBUTORS AS IS AND ANY EXPRESS OR IMPLIED WARRANTIES, INCLUDING, BUT NOT LIMITED TO, THE IMPLIED WARRANTIES OF MERCHANTABILITY AND FITNESS FOR A PARTICULAR PURPOSE ARE DISCLAIMED.

IN NO EVENT SHALL THE COPYRIGHT OWNER OR CONTRIBUTORS BE LIABLE FOR ANY DIRECT, INDIRECT, INCIDENTAL, SPECIAL, EXEMPLARY, OR CONSEQUENTIAL DAMAGES (INCLUDING, BUT NOT LIMITED TO, PROCUREMENT OF SUBSTITUTE GOODS OR SERVICES; LOSS OF USE, DATA, OR PROFITS; OR BUSINESS INTERRUPTION) HOWEVER CAUSED AND ON ANY THEORY OF LIABILITY, WHETHER IN CONTRACT, STRICT LIABILITY, OR TORT (INCLUDING NEGLIGENCE OR OTHERWISE) ARISING IN ANY WAY OUT OF THE USE OF THIS SOFTWARE, EVEN IF ADVISED OF THE POSSIBILITY OF SUCH DAMAGE.

- The App Store is a service mark of Apple Inc.
- iPhone is a trademark of Apple Inc. registered in the United States and other countries. The iPhone trademarks is used under license of iPhone Co., Ltd.
- Android and Google Play are trademarks or registered trademarks of Google LLC
- “WPA™” and “WPA2™” are trademarks of “Wi-Fi Alliance®”.
- Other names, company names, product names, etc. described in this manual are trademarks or registered trademarks of each company. In the text, some ™ and ® marks are not listed.

Software License Information (→page 41-48)

This product incorporates the following software:

- (1) The software developed independently by or for Panasonic Corporation,
- (2) The software owned by third party and licensed to Panasonic Corporation,
- (3) The software licensed under the GNU GENERAL PUBLIC LICENSE Version 2.0 (GPL V2.0).
- (4) Open sourced software other than the software licensed under the GPL V2.0.

The software categorized as (3) and (4) are distributed in the hope that it will be useful, but WITHOUT ANY WARRANTY, without even the implied warranty of MERCHANTABILITY or FITNESS FOR A PARTICULAR PURPOSE.

At least 3 years from delivery of this product, Panasonic will give to any third party who contacts us, please contact your dealer if you need any source code, for a charge no more than our cost of physically performing source code distribution, a complete machine-readable copy of the corresponding source code covered under GPL V2.0 or the other licenses with the obligation to do so, as well as the respective copyright notice thereof.